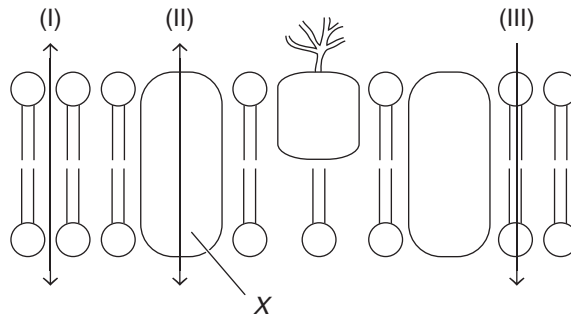


Use the following information to answer Questions 7–9.

The diagram below shows a cell membrane.



Question 7

The chemical composition of X is

- A. cholesterol.
- B. lipid.
- C. protein.
- D. phospholipid.

Question 8

Active transport occurs through

- A. I only
- B. II only
- C. III only
- D. I, II and III

Question 9

Glucose is a small water-soluble carbohydrate.

If the concentration of glucose outside the cell is lower than within, glucose would move into the cell through

- A. I, by diffusion.
- B. II, by facilitated diffusion.
- C. II, by active transport.
- D. III, by active transport.